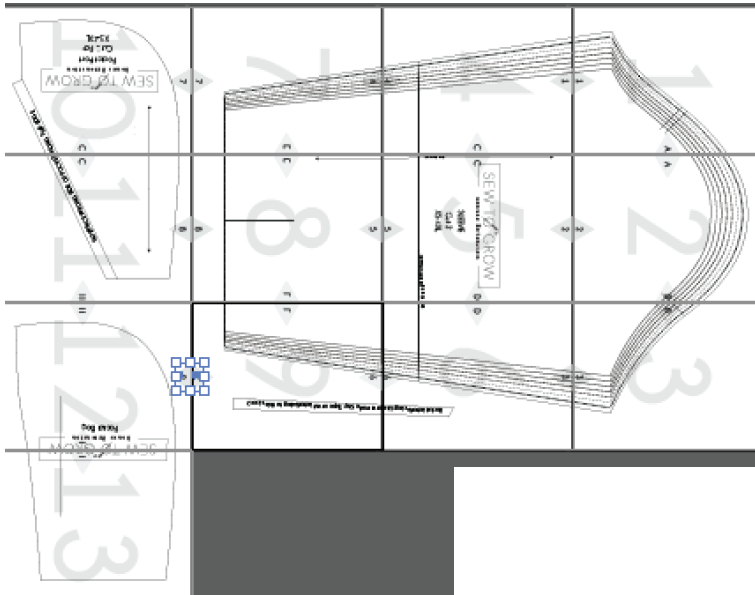


BONUS EXTENSION

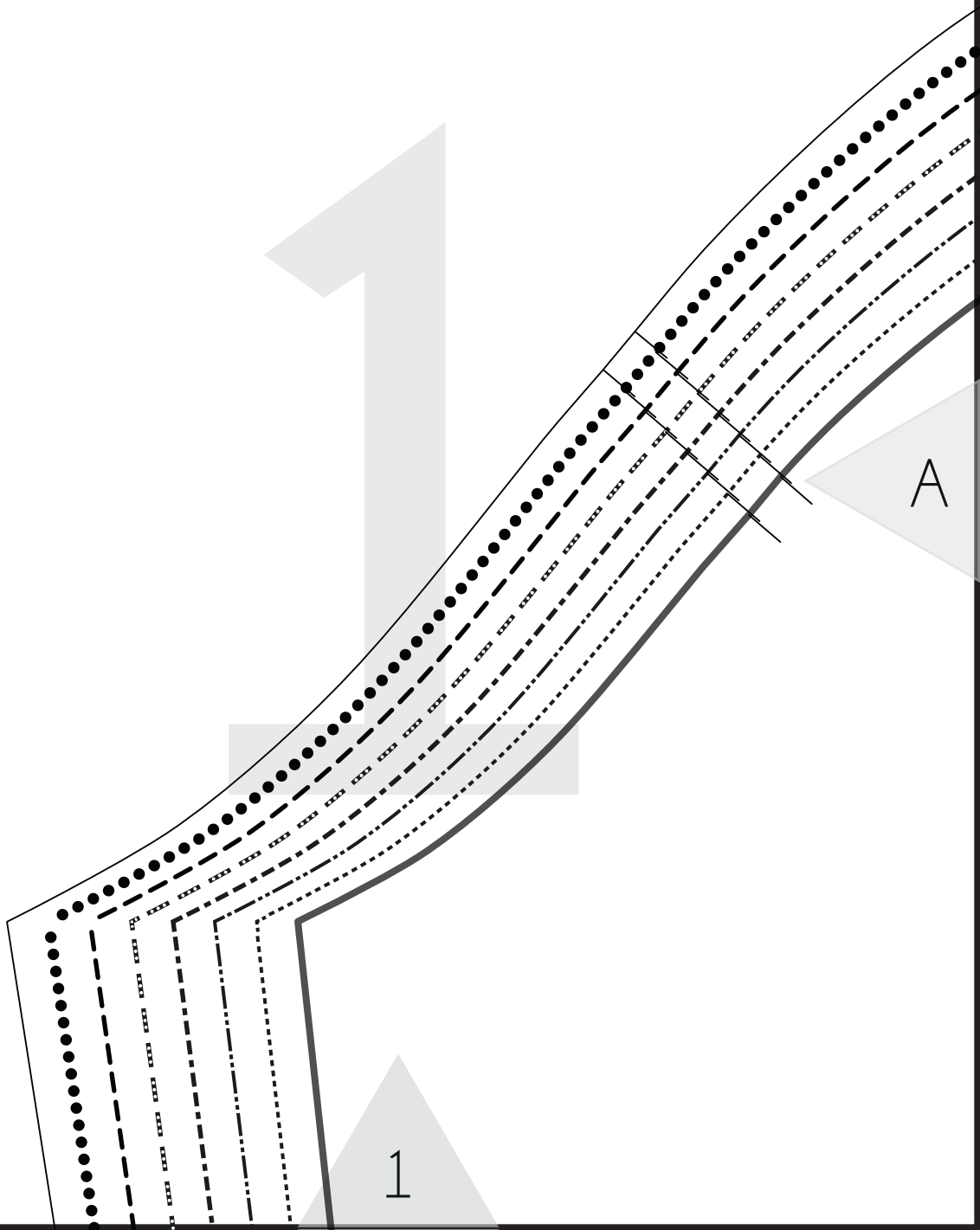


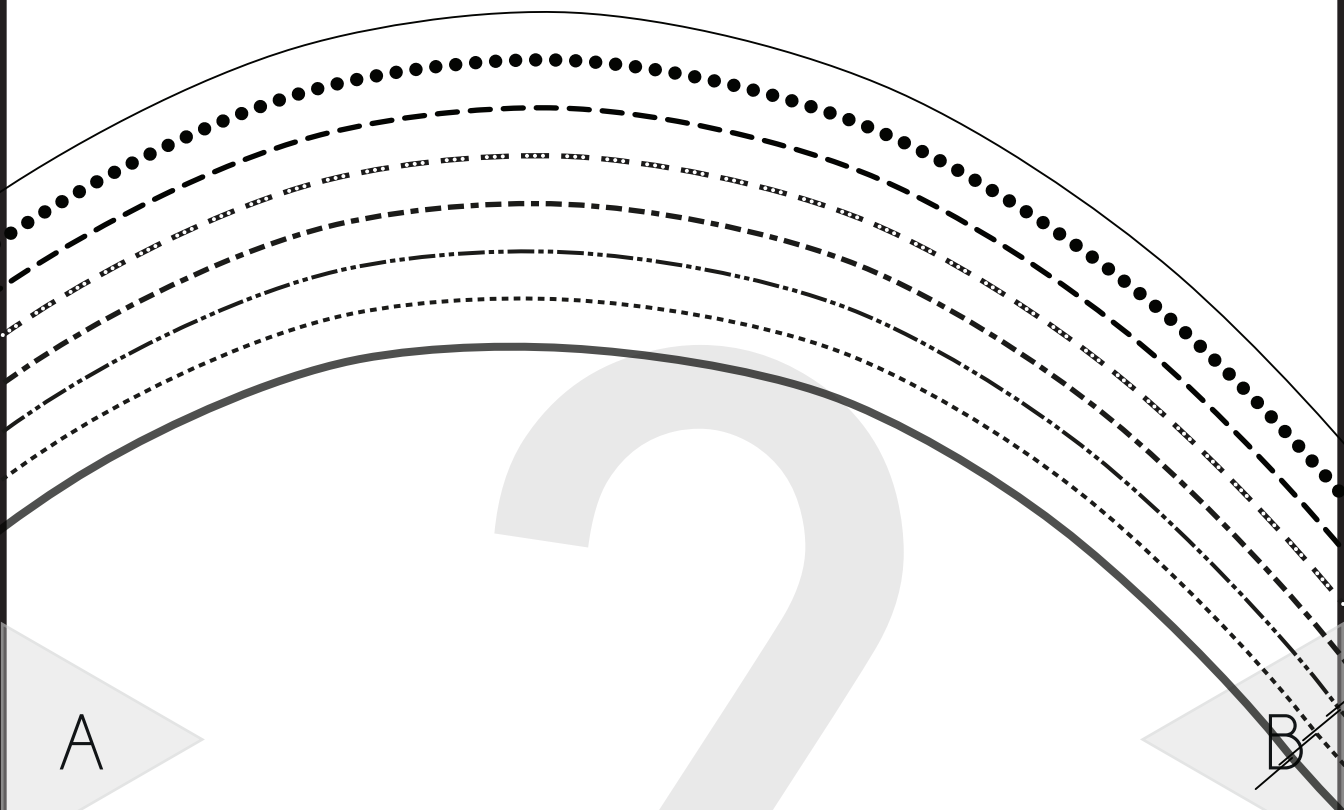
Printing Directions

1. Print Pattern Pieces to Actual Size, not fit to page, within your printer settings. Also make sure that Automatic Landscape/Portrait is checked.
2. Print directions page first and check test square before printing the rest of the templates.
3. Place pages in order: Top: 1-3 Middle: 4-6: 7-9; 10-13
4. Fold back on solid black lines and tape together all triangles and make a diamond by matching letter/number symbol.

Test Square
2" X 2"

Test Square
5cm X5cm



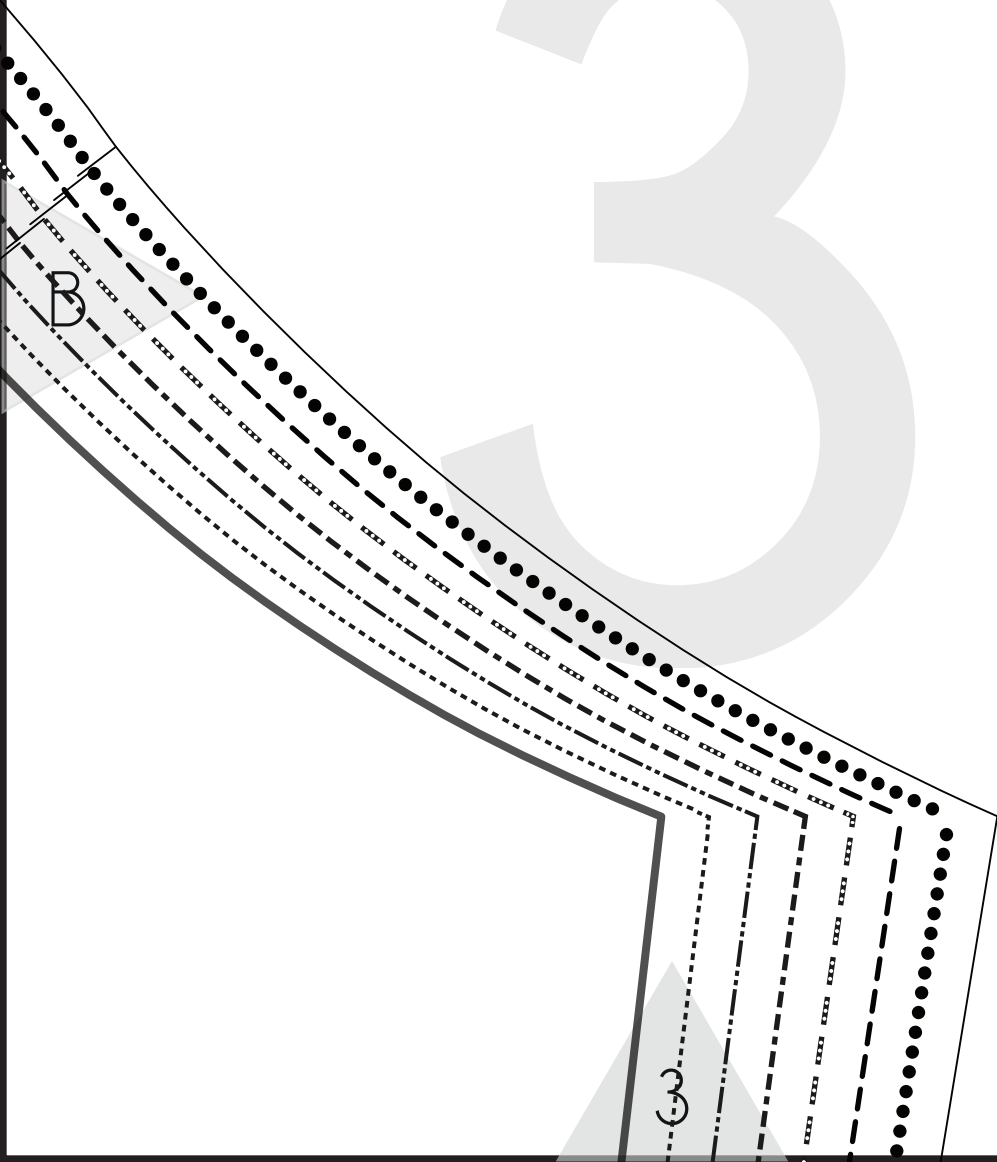


A

B

2

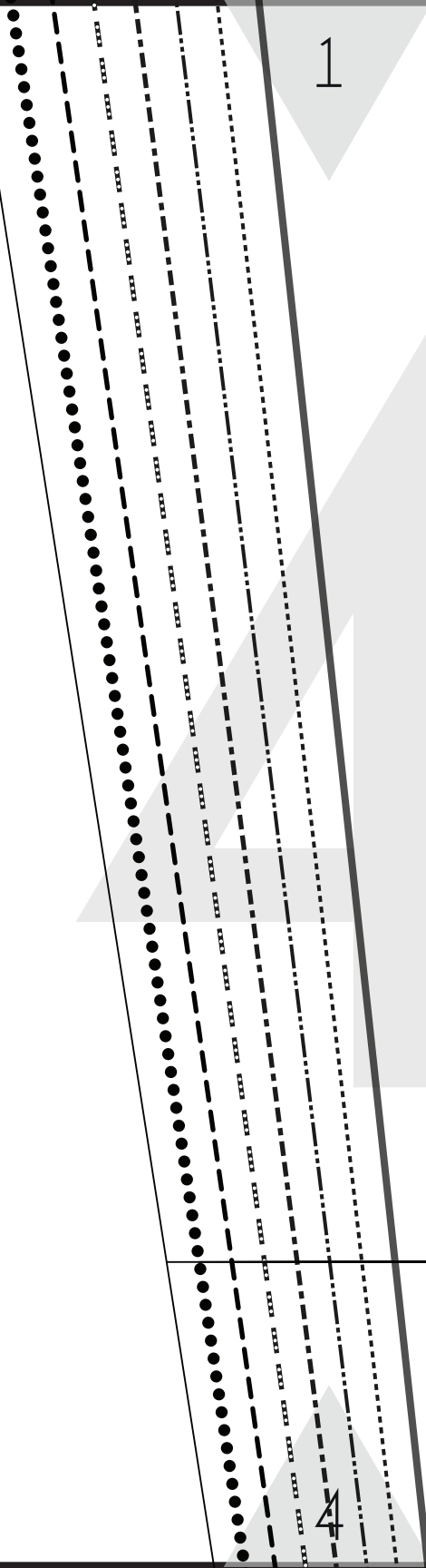
3



1

C

4



2

SEW TO GROW

Bonuse Extension

SLEEVE

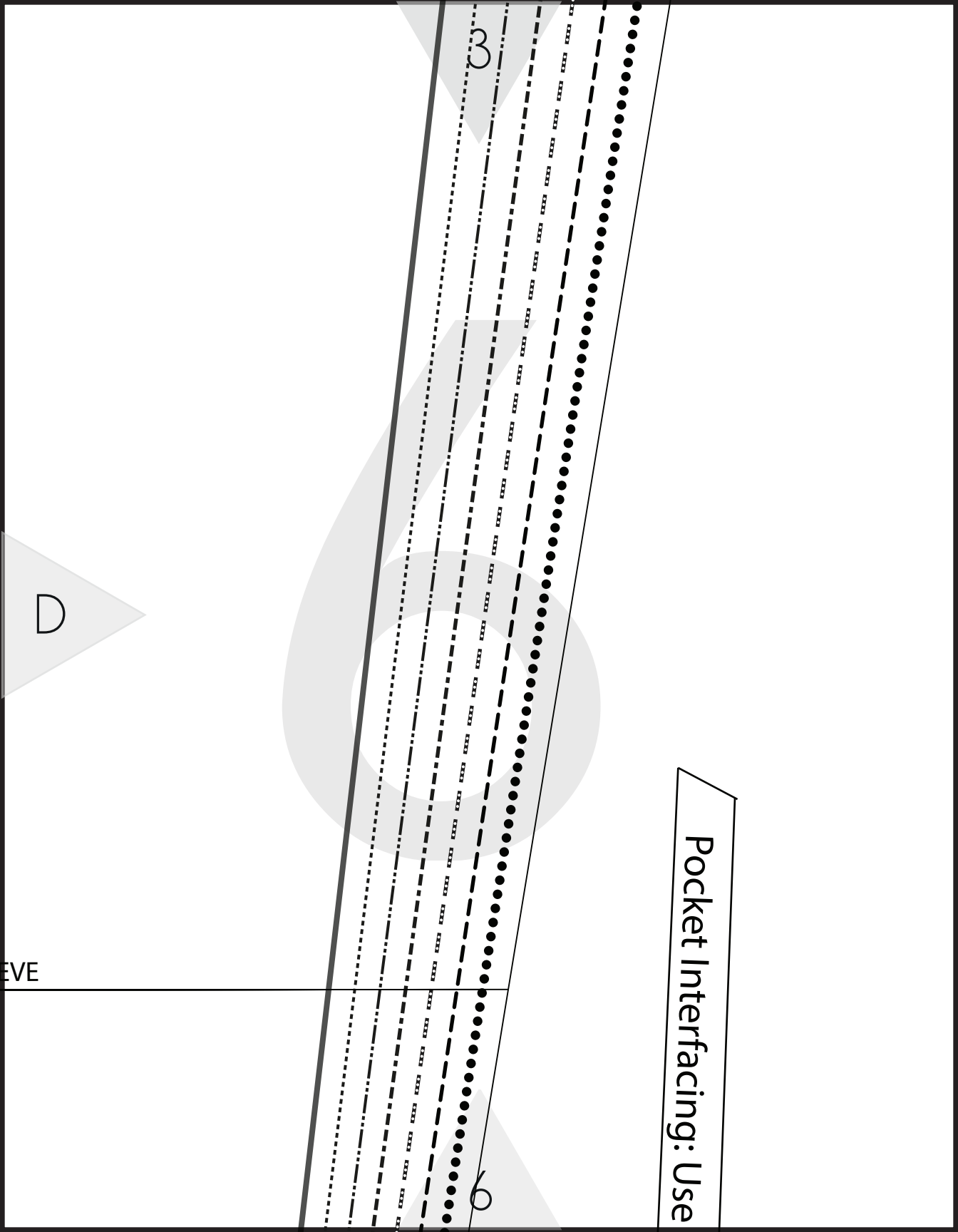
Cut 2

XS-4XL

CUTTING LINE FOR 3/4 SLEEVE

5

GRAINLINE



D

EVE

3

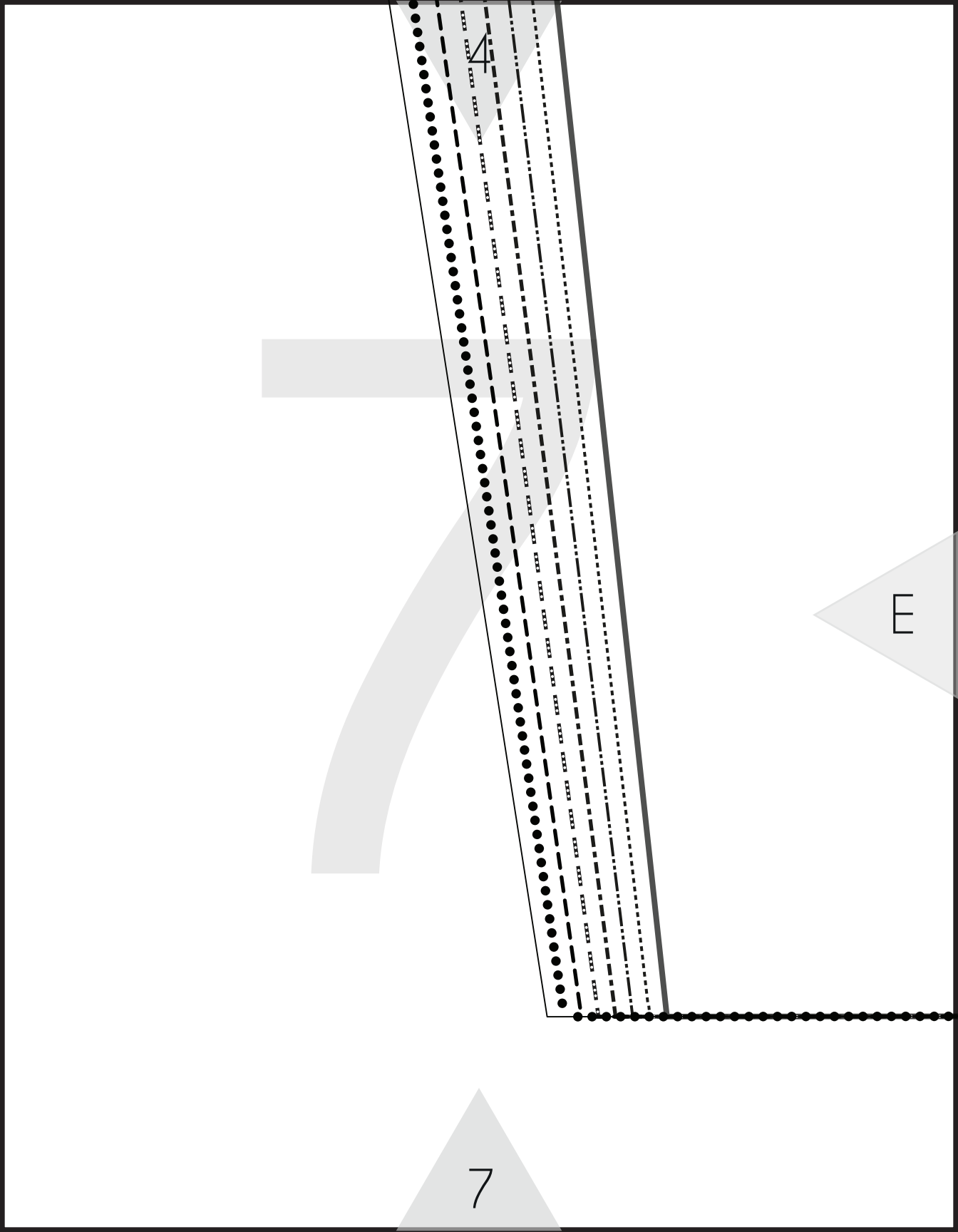
3

Pocket Interfacing: Use

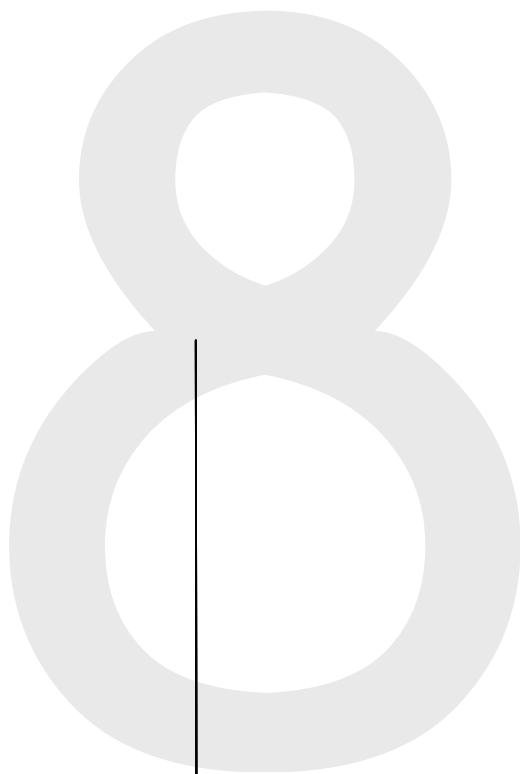
4

E

7



5



E

F

8

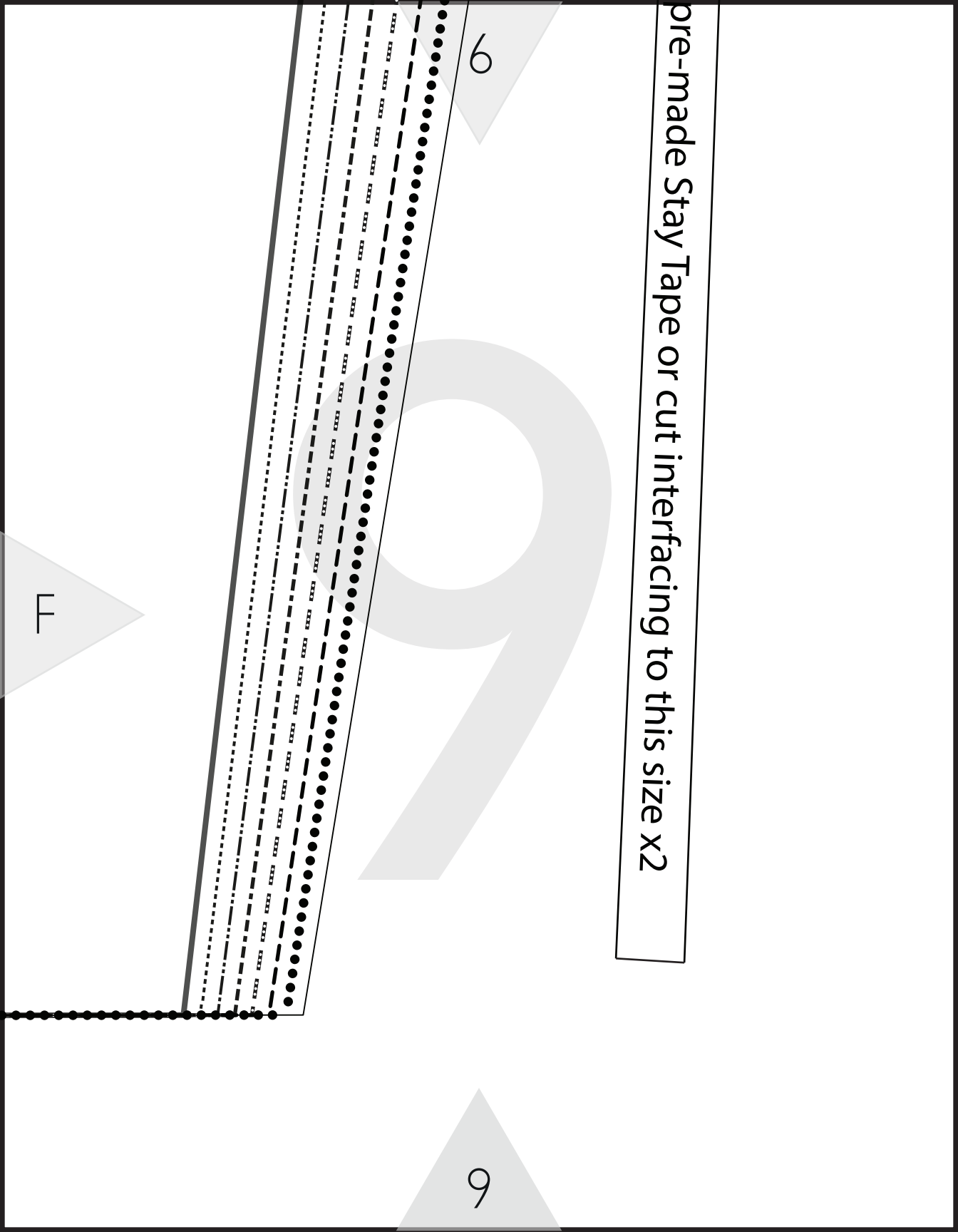


Pre-made Stay Tape or cut interfacing to this size x2

6

9

LL



7

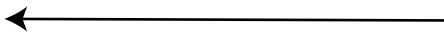
SEW TO GROW

Bonus Extension

Pocket Front

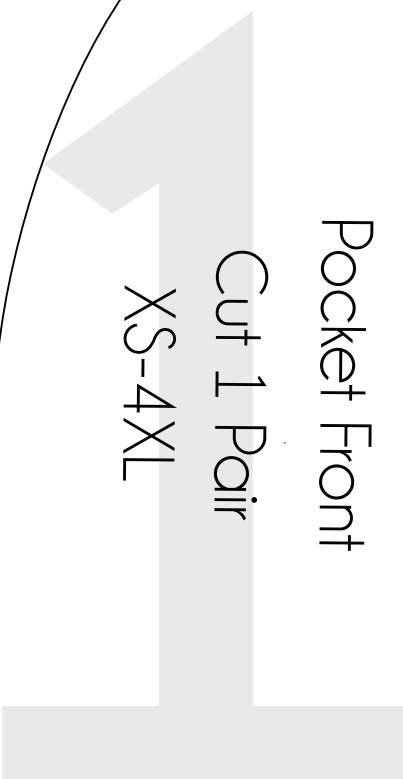
Cut 1 Pair

XS-4XL

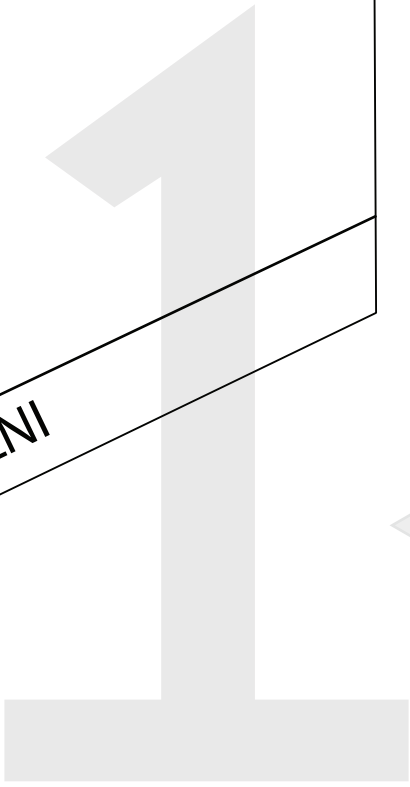
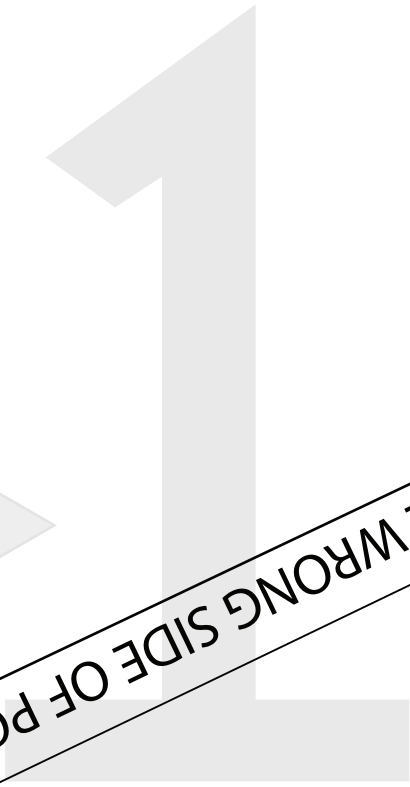
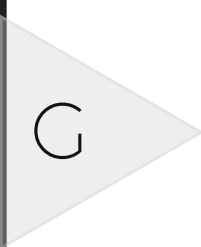


C

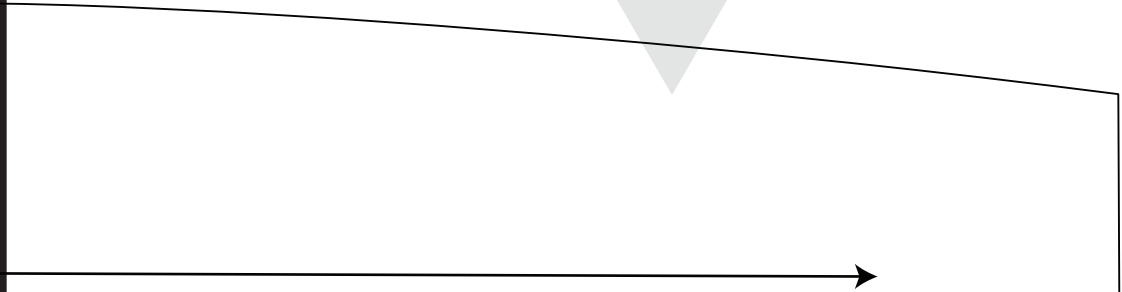
ALONG THIS EDGE



8



INTERFACE WRONG SIDE OF POCKET



Bonus Extension

Pocket Bag

9

H



C
E
M
A
T
I
O
N
S
D
O
M
A
Y



1

3